

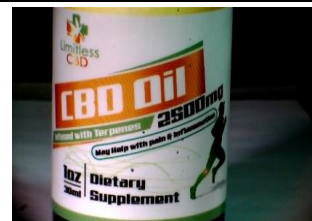
CERTIFICATE OF ANALYSIS



Juniper Analytics, LLC
 1334 NE 2nd Street, Bend, OR, 97701
 541.382.3796
 ORELAP: 4101-001 / OLCC: 10035537931

Client Name: Green Healthy Wellness
 Contact Info: Brian
 Sample Type: Edible
 External Batch ID: NA
 Harvest/Prod. Date: NA
 Sample ID: CBD Oil 2500 MG
 METRC ID: Personal
 Juniper Batch #: **18JA1069.03**
 Intake Date: **7/17/2018**

NOT FOR COMPLIANCE



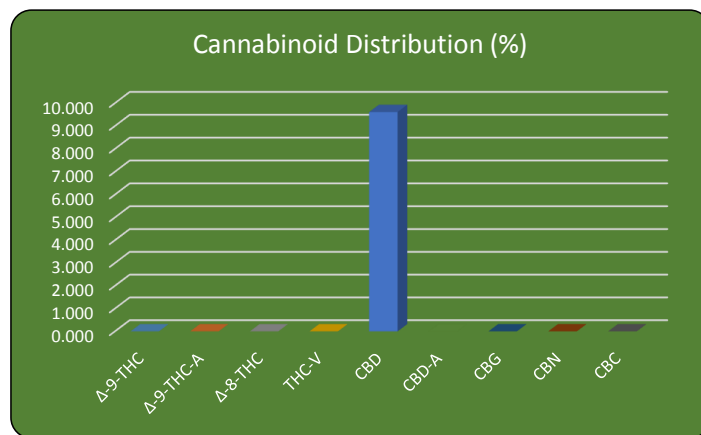
Potency Analysis (Oregon Compliance Standard OAR 333-007-0430)

ANALYSIS DATE: 7/19/2018

Instrument: HPLC/DAD

Method: JA-Potency-Proprietary

| Compound | Weight (%) | Concentration (mg/g) | LOQ * (mg/g) |
|-----------|------------|----------------------|--------------|
| Δ-9-THC | < LOQ | < LOQ | 0.47 |
| Δ-9-THC-A | < LOQ | < LOQ | 0.47 |
| Δ-8-THC | < LOQ | < LOQ | 0.47 |
| THC-V | < LOQ | < LOQ | 0.47 |
| CBD | 9.610 | 96.10 | 0.47 |
| CBD-A | < LOQ | < LOQ | 0.47 |
| CBG | < LOQ | < LOQ | 0.47 |
| CBN | < LOQ | < LOQ | 0.47 |
| CBC | < LOQ | < LOQ | 0.47 |



| TOTAL THC/CBD | Weight (%) | Conc (mg/g) |
|---------------|------------|-------------|
| THC Total = | <LOQ | <LOQ |

$$THC_{Total} = (THC-A * 0.877) + \Delta 9THC$$

| | | |
|-------------|-------|-------|
| CBD Total = | 9.610 | 96.10 |
|-------------|-------|-------|

$$CBD_{Total} = (CBD-A * 0.877) + CBD$$

* < LOQ - Less than the Limit of Quantification

Batch QC WorkGroup ID:
 Potency PO-7-17-18-2

APPROVAL

Stephen M.

 QA Review

Report Date: 7/19/2018